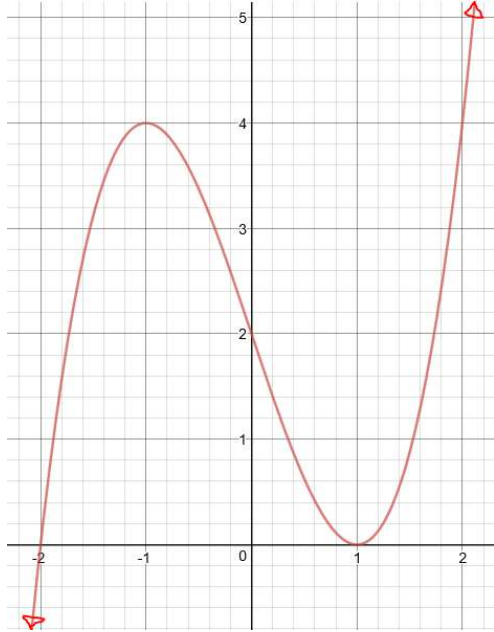
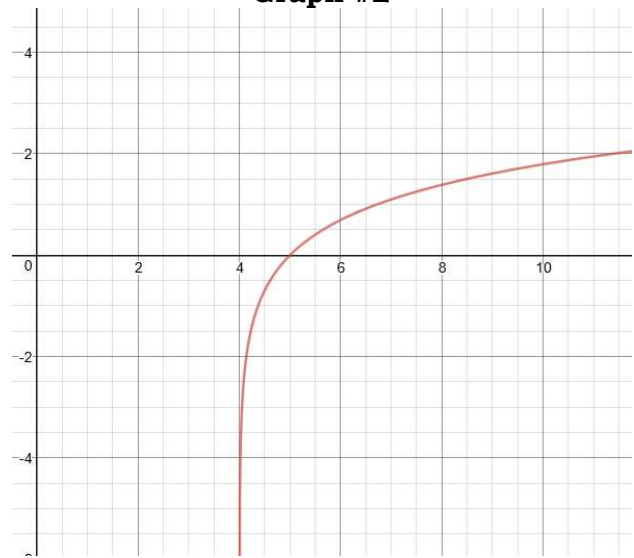


**Graph #1**



- a) x-intercept: \_\_\_\_\_  
y-intercept: \_\_\_\_\_
- b) Absolute extrema (if any):  
Relative extrema (if any):
- c) Increasing intervals (if any):  
Decreasing intervals (if any):
- d) Positive intervals for (if any):  
Negative intervals (if any):
- e) Domain: \_\_\_\_\_  
Range: \_\_\_\_\_
- f) Describe the end behavior of your function.

**Graph #2**



- a) x-intercept: \_\_\_\_\_  
y-intercept: \_\_\_\_\_
- b) Absolute extrema (if any):  
Relative extrema (if any):
- c) Increasing intervals (if any):  
Decreasing intervals (if any):
- d) Positive intervals (if any):  
Negative intervals (if any):
- e) Domain: \_\_\_\_\_  
Range: \_\_\_\_\_
- f) Describe the end behavior of your function.